

# The KidTools™ Support System

## *KTSS and STSS Programs* ReadMe

This ReadMe contains instructions for using tool programs on the **KTSS Wristband** or downloaded from the KidTools.org and StrategyTools.org website.

### ReadMe Sections

1. Computer System Requirements
2. Contents & Layout of Wristband
3. Copy and/or Install on My Computer
4. Instructions for Use
5. Saved Sessions & Cards
6. Additional Installers
7. Additional Support Resources  
Footnotes, Funding & Copyright

### 1. Computer System Requirements

#### Windows Users

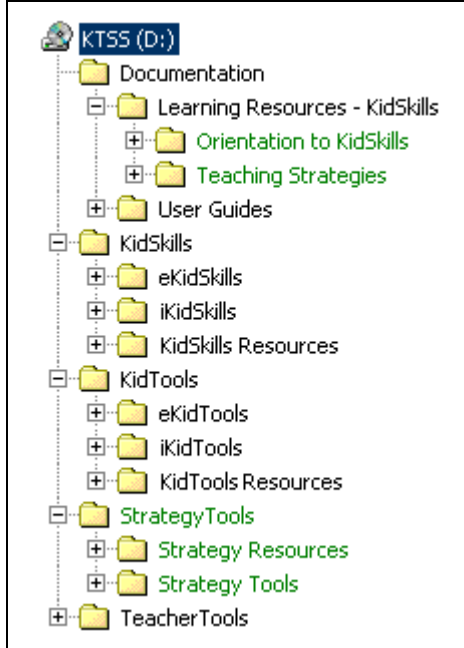
<b>Operating System</b>	Windows 98 / ME / 2000 / XP
<b>Processor</b>	200 MHz minimum, faster recommended.
<b>Memory</b>	16 Mb minimum, more recommended.
<b>Available Storage</b> (For Saving Session Records & Cards)	1 Mb minimum.
<b>Display &amp; Sound</b>	800x600 resolution at 256 colors minimum. 16 bit color or higher recommended. Soundcard & speakers or headphones required.
<b>Documentation Viewer</b>	Adobe® Acrobat Reader <sup>†</sup> . Most recent version recommended.
<b>Movie Viewer</b>	Apple QuickTime 6.5 or newer.
<b>CD-ROM Speed</b>	Minimum 4x speed.

#### Macintosh Users

<b>Operating System</b>	MacOS X, MacOS 9.2.2, or MacOS X with Classic environment.
<b>Processor</b>	200 MHz minimum, faster recommended.
<b>Memory</b>	48 Mb <b>Free</b> minimum, more recommended.
<b>Available Storage</b> (For Saving Session Records & Cards)	1 Mb minimum.
<b>Display &amp; Sound</b>	800x600 resolution at 256 colors minimum. 16 bit color or higher recommended. Soundcard & speakers or headphones required.
<b>Documentation Viewer</b>	Adobe® Acrobat Reader <sup>†</sup> . Most recent version recommended.
<b>CD-ROM Speed</b>	Minimum 4x speed.

## 2. Contents & Layout of the KTSS Wristband

The contents of the wristband are laid out in the following manner:



Items in **Green** are only available for the Windows platform.

## 3. Copy and/or Install on My Computer

It is prohibited to make and distribute copies of this Wristband or of any files contained on it with the following exception:

You are permitted to copy content from this Wristband to one or multiple computers' hard-drives or to a shared network space to facilitate multi-user use of the software. Please be aware that to copy a program like **eKidSkills**, you must copy the **eKidSkills** folder enclosing the program and all the visible and invisible files contained in that folder that are necessary for the program to function correctly.

You are also permitted to copy the content from this Wristband to your hard-drive to improve its performance.

## 4. Instructions for Use

### **Windows Users**

1. Place the **KTSS Wristband** in the USB port and wait for the USB port name to change to **KTSS**.
2. Double-click the **KTSS Wristband** icon to open. The WRISTBAND contains folders holding the **Documentation** for the programs, and separate program folders for each of the four major tool groupings: **Kidskills**, **KidTools**, **StrategyTools**, and **TeacherTools**.
3. Double-click to open the folder containing the item(s) you wish to use.
  - a. The **Documentation** folder contains the **User Guides** and **Learning Resources – KidSkills** folders. To view documents present in these folders, double-click the documents to open them.

- i. Adobe® Portable Document Format documents ( Files ending in **.pdf** ) will require Adobe® Acrobat Reader to be installed.
  - ii. **Learning Resources – KidSkills** also contains these folders: **Orientation to KidSkills** and **Teaching Strategies**. Double-click to open the folder for the program you wish to use. Locate the executable program file of the same name... e.g., **Teaching Strategies.exe** , and double-click to launch the program.
- b. To run the **KTSS Wristband** programs, double-click to open the appropriate major tool group folder.
- i. **KidSkills** contains these folders: **eKidSkills**, **iKidSkills**, and **KidSkills Resources**. Double-click to open the folder for the program you wish to use. Locate the executable program file of the same name... e.g., **eKidSkills.exe** , and double-click to launch the program.
  - ii. **KidTools** contains these folders: **eKidTools**, **iKidTools**, and **KidTools Resources**. Double-click to open the folder for the program you wish to use. Locate the executable program file of the same name... e.g., **eKidTools.exe** , and double-click to launch the program.
  - iii. **StrategyTools** contains these folders: **StrategyTools** and **StrategyTools Resources**. Double-click to open the folder for the program you wish to use. Locate the executable program file and double-click to launch the program.
  - iv. **TeacherTools** contains the **TeacherTools.exe** and **Tool Resources.exe** executable programs. Double-click either to launch.

### Macintosh Users

1. Place the **KTSS Wristband** in the USB port and wait for the **KTSS WRISTBAND** icon to appear on your desktop.
2. Double-click the **KTSS Wristband** icon to open. The WRISTBAND contains folders holding the **Documentation** for the programs, and separate program folders for each of the three major tool groupings: **Kidskills**, **KidTools**, and **TeacherTools**.
3. Double-click to open the folder containing the item(s) you wish to use.
  - a. The **Documentation** folder contains the **User Guides** and **Learning Resources – KidSkills** folders. To view documents present in these folders, double-click the documents to open them.
    - i. Adobe® Portable Document Format documents ( Files ending in **.pdf** ) will require Adobe® Acrobat Reader to be installed.
  - b. To run the **KTSS Wristband** programs, double-click to open the appropriate major tool group folder.
    - i. **KidSkills** contains these folders: **eKidSkills**, **iKidSkills**, and **KidSkills Resources**. Double-click to open the folder for the program you wish to use. Locate the executable program file of the same name... e.g., **eKidSkills**, and double-click to launch the program.
    - ii. **KidTools** contains these folders: **eKidTools**, **iKidTools**, and **KidTools Resources**. Double-click to open the folder for the program you wish to use. Locate the executable program file of the same name... e.g., **eKidTools**, and double-click to launch the program.
    - iii. **TeacherTools** contains the **TeacherTools** and **Tool Resources** executable programs. Double-click either to launch.

## 5. Saved Sessions & Cards (And transferring these records between computers)

### Introduction

When you begin the Tools, Skills or Strategies programs the software will ask you to choose the location where you want your files saved.

In that location, the software will create directories containing your saved cards and records. Let's assume for this example that you're using **eKidTools (eKT)**, you've chosen to save on the **d:\** drive on your Windows computer or to the **Macintosh HD** drive on your Macintosh computer, and that the user name you've used when creating your cards is **Sally Student**. The directory structure the software creates is as follows:

### **Windows**

*d:\KidRecords\Sally Student\eKT\*

### **Macintosh**

*Macintosh HD:KidRecords:Sally Student:eKT:*

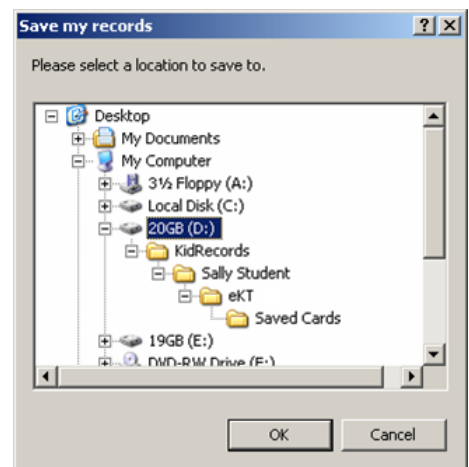
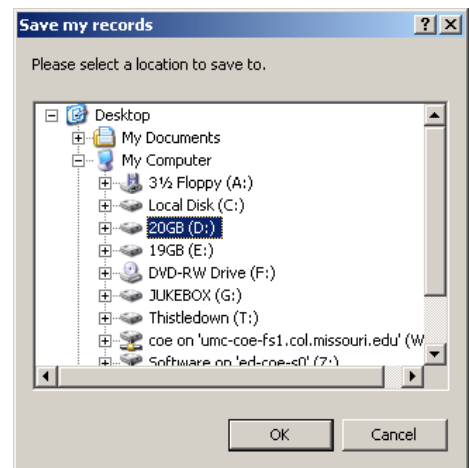
Within that directory, the software will store a file named **KidPath.txt** and a directory named **Saved Cards**. The **KidPath.txt** file contains a record of your use of the program, and the **Saved Cards** directory contains a saved file for each card you've made.

### Moving to a Different Machine

If you wish to transfer your records and cards to another machine, **copy the entire KidRecords** directory to the other machine. Be sure to only **copy** the directory to the new machine rather than **move** the directory if other people have stored their records in that same folder.

### An important note for Macintosh Users

MacOS X added a new pull-down menu between the **Blue Apple** and the **File** pull-down menu in our programs with a choice to quit the program. Using this quit method instead of the **Quit** choice in the **File** pull-down menu will result in your records and cards not being saved to disk and you will lose your work and changes.



## Telling the Software Where to Find Your Saved Cards and Records

When you have previously stored cards or records that you wish to use with a specific software program, you will need to tell the software where to find those records.

To do this, you must know the location of the **KidRecords** folder that contains your saved cards. You must also give your name to the software exactly as you gave it the previous time you ran the program. In the previous example we used the name **Sally Student**. Let's assume for this example that we have not moved the directory from the previous example and that it is still located in the root of the **d:\** or **Macintosh HD** drive.

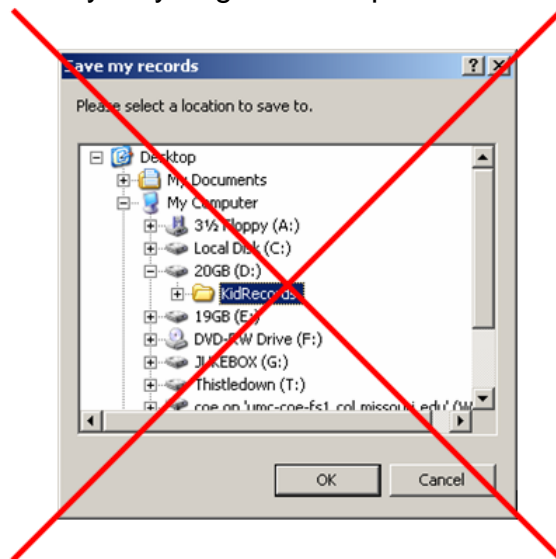
### Windows

*d:\KidRecords\Sally Student\KT\*

### Macintosh

*Macintosh HD:KidRecords:Sally Student:eKT:*

When you run the software a second time you may be tempted to click on the **KidRecords** folder and then click the **Ok** button to save/read your records there. This temptation is understandable, but to do so will not have the hoped for results.



To be successful, you must choose the directory/folder or drive which **contains** the **KidRecords** folder. For Windows users, this means that you must click to highlight the **d:\** drive and then click the **Ok** button. For Macintosh users, this means that you must click the **Macintosh HD** drive and then click the **Ok** button.

In this example we used the root directory of a drive, but the same is true if you use a sub-directory of a drive. For example, let's assume that the first time you ran the software you chose a folder/directory named **My Files**. This would mean your hierarchy looks like this:

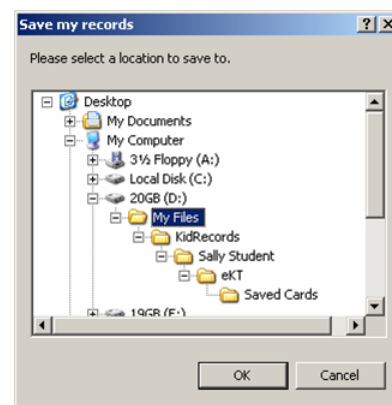
### Windows

*d:\My Files\KidRecords\Sally Student\KT\*

### Macintosh

*Macintosh HD:My Files:KidRecords:Sally Student:eKT:*

Again, to be successful, do not select the **KidRecords** folder and then click **Ok**, but instead click the folder **containing** the **KidRecords** folder, in this case the **My Files** folder.



## 6. Additional Installers

Viewing items in the documentation folder require Adobe® Acrobat Reader or similar to be installed on your computer. Viewing the movie content of the **Teaching Strategies** program (Windows only) requires Apple QuickTime to be installed on your computer. We recommend that you always install the most up to date versions of these software programs if you are able. If you have Internet capabilities, visit the publisher's websites and check for updates. These websites are:

Adobe® Acrobat Reader - <http://www.adobe.com/products/acrobat/readstep2.html>

Apple QuickTime - <http://www.apple.com/quicktime/>

## 7. Additional Support Resources

If you need answers to questions with these materials that are not addressed in the enclosed documentation, please visit the **KidTools Support System** website.

The address for this website is: <http://KidTools.missouri.edu/>

### Footnotes:

™ **Tran, KidTools, eKidTools, iKidTools, PictureTools, TeacherTools, KidSkills, eKidSkills, iKidSkills, Strategy Tools, Strategy Coach, StrategyTools Resources, KTSS, KidTools Support System and StrategyTools Support System**, are either registered trademarks or trademarks of the University of Missouri in the United States. © 2006 The Curators of the University of Missouri. All rights reserved.

\* **File Extensions** - The file extensions may not be visible to you. The Windows operating system gives users the option to **Hide** file Extensions e.g., .pdf, .exe, etc. To make the extensions visible you may change this setting within the **Folder Options** control panel, which is accessed by clicking **Start Menu » Settings » Control Panels**.

† **Adobe PDF Documents** - Documentation on this WRISTBAND is provided in Adobe's® Portable Document Format (.pdf), and will require Adobe® Acrobat Reader to be installed on your computer. An installer may be downloaded directly from Adobe's® website at: <http://www.adobe.com/products/acrobat/readstep2.html>

‡ **Apple QuickTime** - The movies associated with certain programs on this WRISTBAND will require Apple's QuickTime media player to be installed on your computer to run. An installer may be downloaded directly from Apple's website at: <http://www.apple.com/quicktime/>

\* **Errors caused by Long Filepaths** - Several odd errors for missing or corrupted drivers / DLLs / Xtras / Sound Files / etc may appear if the program folder or the folder containing User Records is nested too deeply in a path. Often these problems will be very difficult to diagnose as the program may either give very unhelpful error messages or warnings, or no error messages or warnings at all. If you suspect a problem with deeply nested paths, try running the program from, or saving User Records, to a less deeply nested location on the hard-drive, e.g.,

**c:\Strategy Tools\Strategy Resources\Strategy Resources.exe** rather than  
**c:\Documents and Settings\Username\Desktop\Strategy Tools\Strategy Re...**

and

**c:\KidRecords\** rather than  
**c:\Documents and Settings\Username\My Documents\School Work\KidRecords\**

### Funding Information

These projects have been funded in part by Grants #H029K70089, #H327A000005, and #H327A030044 from the U.S. Department of Education.

©1999 - 2010 The Curators of the University of Missouri, a public corporation.  
All Rights Reserved.

*Adobe, the Adobe logo, and Acrobat are either registered trademarks or trademarks of Adobe Systems Incorporated in the United States and/or other countries. © 2004 Adobe Systems Incorporated. All rights reserved.*